

SMASHED



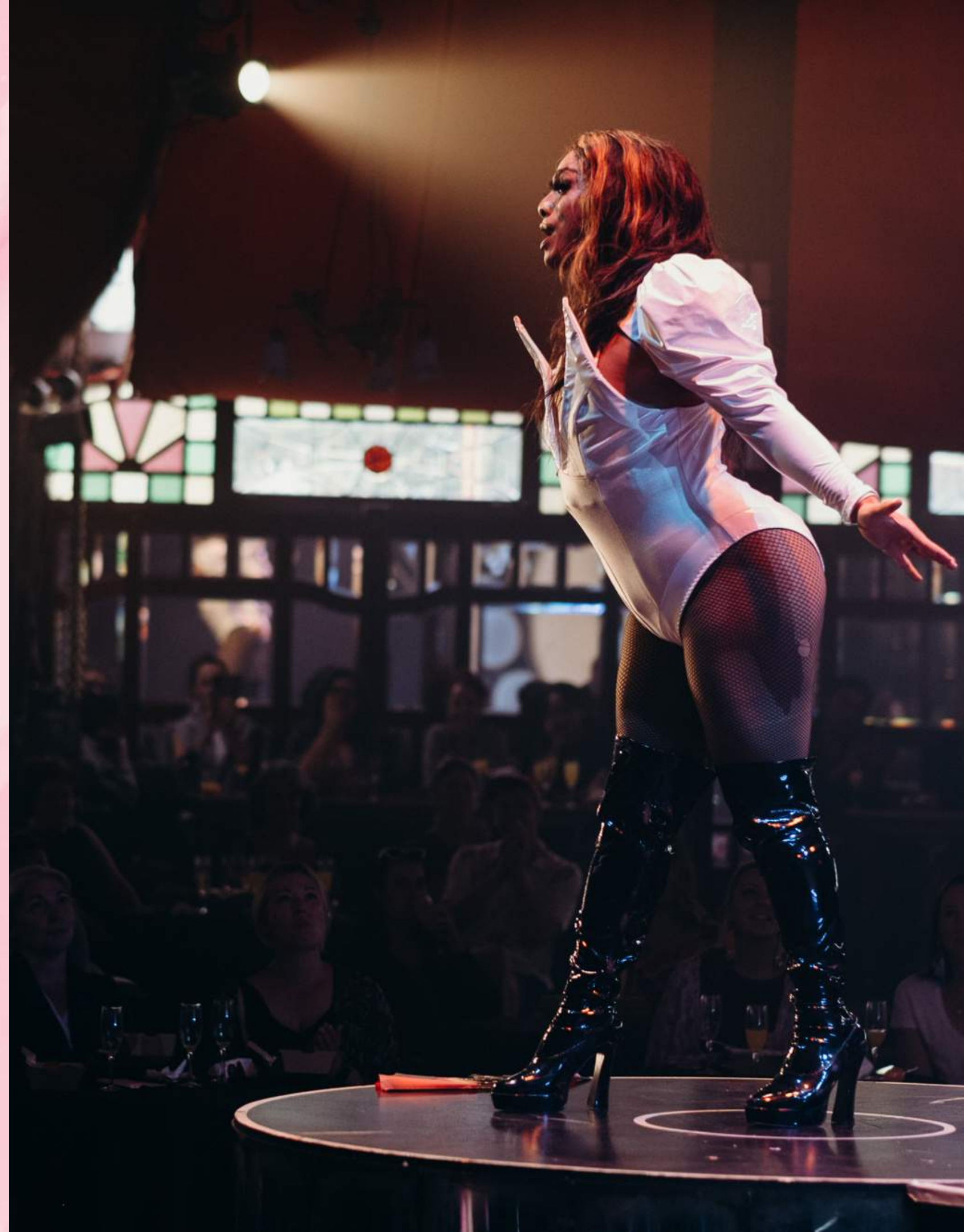
Hey
BOSS

ABOUT

Smashed - The Brunch Party is a femme-fronted and fiercely fabulous variety extravaganza; a high-energy, world-class smorgasbord of cabaret, drag, circus, burlesque and comedy served up alongside an innovative dining experience! Performed by an outrageously talented cast this late-night-show-during-day-time-hours concept is unique within the Australian festival scene, and draws on a rich lineage of drag brunch shows that are intrinsic to queer performance history and development in New York, London and around the world.

This is the first creative collaboration from Peta Spurling-Brown (**Hey Boss**) and award-winning queer feminist cabaret icon **Victoria Falconer**, whose like-minded approach to accessible, thought-provoking entertainment make them the perfect match for creating edgy commercial work.

Smashed - The Brunch Party debuted as part of Adelaide Fringe 2021 in the gorgeous surrounds of the Victoria Speigeltent at the Garden of Unearthly Delights and has returned each year to audience and critical acclaim. 2023 has been the biggest year yet with *Smashed - The Brunch Party* debuting at Sydney Festival to a sold out crowd, and trialing a new complimentary timeslot in Adelaide with *Smashed Arvo*.





"THE MOST FESTIVAL
FUN YOU CAN HAVE
BEFORE LUNCH."

INDAILY



[WATCH TRAILER](#)



[@SMASHEDSHOW](#)



[@SMASHEDSHOW](#)

IMAGE: JACINTA OATEN

OUR ETHOS

Victoria and Peta set out to **challenge white, cisgendered male dominance** within drag culture. As co-creators, both have a track record of creating work using pop culture and collective experience in a way that is subversive and captivating. Here they turn their gaze towards drag and queer performance, presenting a work of excellence whilst drawing from their own experiences of alienation in the scene; challenging the gatekeepers and boundaries of a sub-culture that has become mainstream.

Our cast is a manifestation of who we want to see on our cabaret and festival stages. These artists are some of the hottest talent on the festival scene, as well as the wider arts industry. **Passionately and proudly diverse**, we seek to normalise representation along the intersections of race, culture, sexuality and gender. Our commitment to amplifying and uplifting IBPOC performers will be upheld wherever we tour - not as a selling point, but as standard.

Smashed is also driven to bring joyful, social experiences to audiences that might otherwise miss out. **Parents, carers or people with access needs** and/or other responsibilities often find it difficult to get to festival entertainment in the evening. Our format provides a solution to the lingering possibility of limited capacities due to COVID-19 - **extending exceptional adult programming into daylight hours**, with flexible seating parameters and offering variation from family entertainment that often dominates weekend schedules.



Example Cast

Bettie Bombshell
Burlesque



Victoria Falconer
Host

Jazida
Burlesque / Host



Kween Kong
Drag



Malia Walsh
Circus

Dale Woodbridge-Brown
Circus





★★★★★

"A 'SMORGASBORD'
OF ENTERTAINMENT"

GLAMADELAIDE

Audience Feedback

"I've never seen an audience enjoying themselves so much before the show has even started." - Damian C.

"You can tell the cast and crew genuinely care for each other and are having a blast - it's infectious!" - Adele S.

An amazing show!! Victoria Falconer is fabulous and so was the entire cast of the show - all extremely talented and entertaining - have recommended to so many people! - Isabella M.

What a great cure for a hangover! Great early morning entertainment with brunch box and a hair of the dog drinks! - Nick P.



SMASHED

THE BRUNCH PARTY

PARTY



REVIEWS & AWARDS



PICK OF THE FRINGE



BEST EAT & DRINK

★★★★★ "Innovation, comedy, and talent abound"
GlamAdelaide

★★★★★ "If you're looking for some boozy, morning-after fun
during your Adelaide Fringe weekend, look no further."
The Advertiser

★★★★★ "The most festival fun you can have before lunch."
InDaily

"...this show was only ever going to be the stuff of every
dream and fantasy rolled into sixty minutes of pure camp
wickedness... If you can only get to one show this Fringe,
make it Smashed."
Theatre Travels

VENUES

SUITABLE VENUES

The adaptability of cabaret means that Smashed would present equally as well in a theatre as it would a spiegel tent, an outdoor stage or a purpose-built festival venue. We encourage presenters to be creative with venues, inviting audiences to interact with spaces that they might not normally experience day-time hospitality and entertainment in. Smashed is suitable for venue share with evening shows.

TOURING PARTY

The touring version of Smashed includes four to five toured cast members and three crew, with one or two local guest acts featured alongside the toured cast. The show is designed to be able to easily rehearse guests in quickly, creating a cohesive and slick hour of glitz, glam and good times. We do this to promote a sustainable and supportive performing arts ecology as well as uplifting the local scene.

FOOD & BEVERAGE

Smashed is staged as an inclusive "dinner & show" model, with a drink (mimosa or non-alcoholic beverage) on arrival and pre-set brunch included in each ticket. Venues should run an internal bar for additional revenue. Smashed is an immersive experience - the performers interact with the audience on arrival and as they depart - which promotes a relaxed atmosphere to bar service. We can work with venues who have kitchen capabilities to create plated meals or sharing platters, or equally engage a local catering company to provide a brunch solution that is sophisticated, sexy and safe. Welcoming and fabulous FOH support is imperative to this show, and can be included in the touring party or sourced locally.

TECH SPECS

Show Duration: 60 minutes + 20 mins either side for audience mingling

Number of Performers: 6 | Company size: 9 | Max. shows per week: 4 (see Example Running Order)

SOUND

- In-house sound system to accommodate QLAB file playback
- 3 Radio handheld mics
- 2 Foldback speakers
- 1 DI for violin/theramin pickup

LIGHTING

- Any basic in-house system
- Basic whole stage wash – Profiles and LEDs
- Haze
- Follow spot

STAGING

- Masking require side of stage
- Backstage crossover
- Stage treads if raised stage

DRESSING ROOMS

Secure, well-lit, well-ventilated dressing rooms with sufficient seating, clothes racks, mirrors and seating for 6 performers. Access to backstage toilets and shower.

TOURED SET

We tour with a LED sign 1500mm x 633mm which requires rigging in front of drapes, and can be operated via in-house LX desk. Presenter is required to source a standard beer keg (empty).

STAFFING

Toured crew include Production Manager, Stage Manager and Producer. Presenters to provide an experienced LX & sound operator, 1 qualified circus rigger, and FOH hosts, unless otherwise negotiated.

RIGGING

- Single point
- 1 tonne dynamic safe working load
- Ground anchored single point



★★★★★
"IF YOU CAN ONLY GET
TO ONE SHOW THIS
FRINGE, MAKE IT
SMASHED."
THEATRE TRAVELS

IMAGE: JACINTA OATEN

EXAMPLE RUNNING ORDER

10.20am - Hosts greet attendees as they arrive, mimosas are served, guests seated at tables pre-set with brunch

10.35am - Host performs an opening song and housekeeping

10.40am - Act 1 performs (circus, 5 mins)

10.50am - Act 2 performs (burlesque 5 mins)

11.00am - Act 3 performs (guest - musical cabaret 5 mins)

11.05am - Host plays audience game

11.10am - Act 4 performs (drag 5 mins)

11.20am - Act 5 performs (circus aerial 5 mins)

11.25am - Host & Act 6 performs closing number/finishes show section

11.30am - Guests have 15 mins to stay, host and acts meet and greet if possible

11.45am - changeover

12.30pm - possible second sitting begins, same timeline as above

BIOGRAPHIES



Victoria Falconer - Producer/Creator

Award-winning cabaret artist, multi-instrumentalist and musical director. Recent work includes *We Are Here* (Darlinghurst Theatre Company), *The Boy Who Talked To Dogs* (Slingsby/State Theatre SA) and *Oklahoma* (Black Swan State Theatre). Her feminist troupe *Fringe Wives Club* (Glittery Clittery) has sold-out shows from Soho Theatre to Darwin Festival, winning Edinburgh's Spirit of the Fringe 2018. Victoria has twice received Adelaide Fringe's Best Cabaret (2011/2018).

Peta Spurling-Brown (Hey Boss) - Producer/Creator

An award-winning production and management company working with some of the most exciting theatre, music, cabaret and comedy shows on the global festival circuit. Their collaborative approach has seen successful seasons with *Fleabag* (with DryWrite & Soho Theatre), *Abandoman*, *Damian Callinan*, *Jamie MacDowell & Tom Thum*, *Double Denim* and more.



CONTACT

Peta Spurling-Brown
peta@heyboss.com.au

+61 401 437 886
heyboss.com.au

SMASHED

THE BRUNCH PARTY

PARTY

